



UNION COUNTY
HISTORICAL SOCIETY

103 S. 2nd St., Lewisburg, PA 17837
info@unioncopahistory.com
570-524-8666

August 2023

"Exploring Union County's past to inform the present and future."

Union County's NEWEST Historic Site

As you've probably heard by now, UCHS has acquired the former Packwood House property at Market and North Water streets, and renovations have begun.

Over the past twelve weeks, board members and volunteers have cleared out refuse, scrubbed floors, washed windows, and painted surfaces to prepare for a public Open House and upcoming programming.



Other members of our Physical Plant Committee have restored the garden and hired an engineering firm to assess the structural condition and mechanical systems of both buildings. One major renovation will involve converting the two existing restrooms into one unisex restroom. That will make it compliant with standards set by the Americans with Disabilities Act and help us when we seek future Federal grants.

If you'd like to help us with any projects, we'll have plenty of volunteer opportunities in the future. Please get in touch at info@unioncopahistory.com or call 570-524-8666.



Visit our website www.unioncopahistory.com for information on events, publications, resources and more.

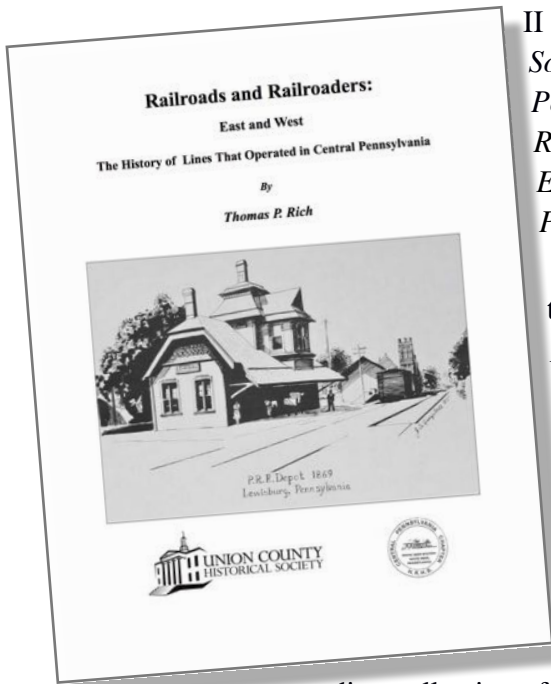


**Special Union County Historical Society Publications:
*Railroads and Railroaders in Central Pennsylvania***



The Union County Historical Society is pleased to announce the upcoming publication of a remarkable historical account of the railroads and railroaders who played an important role in the settlement, growth, and economy of Union County and surrounding areas in central Pennsylvania. This publication – due to be released in November 2023 – is the first of a three-volume set on all aspects of railroading, authored by Thomas P. Rich, Professor of Mechanical Engineering emeritus at Bucknell University. From the vision of a transportation system on wheels set on rail, to the appearance of the iron horses on the landscape, and to the tentacles of the railroad lines running throughout the County, Professor Rich provides an account of the history in fine detail accompanied by an array of vintage photographs.

The set of three volumes will appear as follows: Volume I (2023) is entitled *Railroads and Railroaders: East and West, The History of Lines that Operated in Central Pennsylvania*. Volume II (2024) is entitled *Railroads and Railroaders: North and South, The History of Lines that Operated in Central Pennsylvania*. Volume III (2025) is *Railroads and Railroaders People: Equipment and Infrastructure, Examples from Lines That Operated in Central Pennsylvania*.



Many readers will recall the depth of analysis found in the book *Water-powered Gristmills of Union County, Pennsylvania*, co-authored by Professor Rich and Professor David W. Del Testa. Professor Rich brings this same detailed and insightful analysis to these three volumes by providing a full account of the historical context in which railroading evolved in Union County as well as a skillful overview of its technical evolution up to the modern day. He lays out the Union County railroading story with charts and tables along with an

astounding collection of photographs from his private collection and from collectors, museums, and archives from across the country.

More information will be provided about each volume as it is released and becomes available. The three-volume set in total will be the definitive go-to resource for anyone interested in or researching railroading in Union County and railroading evolution in general.

NOTE: The volumes on *Railroads and Railroaders* are not part of the Heritage series long identified with the Union County Historical Society and provided to members with their dues without extra cost. While the Heritage series will continue as appropriate manuscripts are brought forward, the Union County Historical Society can no longer financially sustain the Heritage series without charging for future volumes. Paper and printing costs have risen so substantially that for the foreseeable future, there will be a charge for all special publications as well as publications in the Heritage series. Thank you for your continued support.

Lois Huffines, UCHS publications chair

FALL PROGRAMS

'Derrstown, You Miserable Town!' If This Street-corner Could Talk

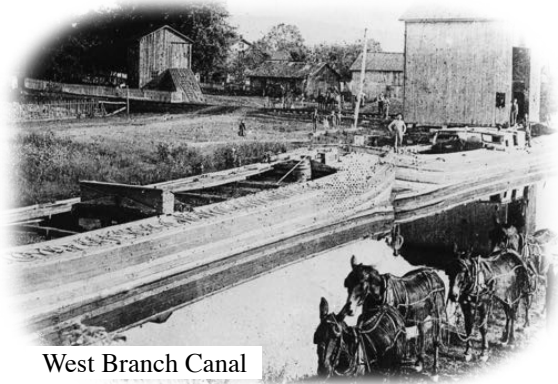
Sunday, September 10 at 2 pm
15 North Water Street, Lewisburg, PA

Bruce Teeple will welcome visitors to the Annex on North Water Street for our inaugural program about early Lewisburg history and the day-to-day realities of life and decision-making on the Susquehanna River frontier.

Imagine a downtown Lewisburg that wasn't so genteel or charming; a Lewisburg without clean streets, concrete sidewalks, or overhanging shade trees; a Lewisburg without the picturesque architecture (or even a Historic Architectural Review Board to keep it that way). Imagine a Lewisburg without a vibrant downtown business district, and a Lewisburg without all the youthful energy and vitality characteristic of a small college town.

UCHS's inaugural program on September 10 will cover the early history of Lewisburg and the day-to-day realities of life and decision-making on the Susquehanna River frontier. Despite being a physical and economic gateway along the shores of the Susquehanna's West Branch, Lewisburg – and this specific neighborhood during the late 1700s and early 1800s – had a raucous, somewhat unsavory reputation just by the nature of the people and the river-oriented businesses.

The program is open to the public, admission is \$3.



West Branch Canal

The DALE-ENGLE-WALKER HOUSE 1471 Strawbridge, Road, Lewisburg, PA

Airplanes and Flight

A two-part series of events at the Dale-Engle-Walker House is scheduled for Saturday, September 16 and Saturday, October 7. The programs, co-sponsored by the Lewisburg Children's Museum, will demonstrate how the principles of aeronautics apply to paper airplanes and to flying kites.

Registration is required. The programs are designed for children up to age 9.

Contact the Children's Museum: michelle@lewisburgchildrensmuseum.org.



Dale-Engle-Walker House tours will resume in September and October, with information posted on our website and emailed to members. Tours and events have been curtailed during the summer as PPL installs new power lines on the property, upgrading the local electric grid. Check our website calendar for information about the property (including the Dale's Ridge Trail).

The Dale-Engle-Walker property is available for family photographs, reunions, weddings and receptions. Contact UCHS at 570-524-8666 or info@unioncopahistory.com for fees and scheduling.

FALL PROGRAMS



Tantalizing Bits of Lewisburg History

Monday, October 23 at 6 pm
Public Library for Union County
255 Reitz Blvd., Lewisburg, PA

Rick Sauers, historian and author, will give a presentation on the history of Lewisburg buildings, businesses, and residents, featuring photos from his extensive collection. His research on the borough (for a new book on Lewisburg) has revealed such interesting details as the closing of Lewisburg hotels under false pretenses in 1916-1917; the fires that destroyed important industries and the stagnate local population; the

evolution of Market Street; the stories of notorious characters who kept “disorderly houses” in the borough, and so much more.

Sauers is a former Central Pennsylvania resident, visiting home in October to receive a Distinguished Alumni Award from Lewisburg High School for his publications on local and Civil War history. He is currently the curator of the Western Museum of Mining and Industry in Colorado Springs, Colorado.

The program is free and open to the public.



UCHS Archives Donates to NYC DS Archives

The society gave the collected papers of John T. Fetherston, Commissioner of New York City street cleaning 1914-1917, to the New York City Department of Sanitation archives.

This trove of documents (acquired from the Packwood House dissolution) included 800+ black and white photographs that were nicely protected in plastic sleeves and in albums, and were properly identified on the reverse side with details about who, what, where, and when.

Tony Shively (photo, center) made the transfer of material to Maggie Lee (on the right), the department's archivist, assisted by her driver Desmond Brannigan (on the left). The group met at the Delaware Water Gap Visitor's Center, a mid-way point between New York City and Union County.



ARCHIVES COMMITTEE REPORT by Tony Shively

The Archives and Collections Committee of the Union County Historical Society fosters the collection of Union County manuscripts, ephemera, local advertising, and decorative arts through gift and purchase. Gifts and donations to the collection of materials held by the society supports its mission of enhancing the appreciation and visibility of Union County history.

We thank the following individuals for donations and gifts accepted by the Committee:

Doyle Garrett of Vidalia, Georgia for donating the 1862 New Testament Bible that once belonged to Isaac Zellers of Mifflinburg. (Special thanks to **Terri (Cooney) Zechman of Dacula, Georgia** for the role she played in securing this donation).

Fay Richard of Mifflinburg for donating a framed May 1977 photograph of the building that once housed Buffalo Grange Camp 520; a booklet from the 53rd Annual Teacher's Institute (1908) held at the Union County Courthouse; and a song book distributed by Edmund Shively of 451 Chestnut Street in Mifflinburg.

Jack Fisher of Lewisburg on behalf of Betty Cook for donating a replica of the Cameron-Cook house located at 201 Market Street in Lewisburg; a Civil War poster advertising an event being held on the grounds of the Slifer House in September 1985; Lewisburg Trust calendars; and a poster containing a color photograph of the Portland Cutter buggy from the Cameron-Cook house.

Brenda Eberhart of Mifflinburg for donating a shopping bag from the Mary Koons Store once located on Chestnut Street in Mifflinburg.

Octagon House Museum of Hudson, WI for donating a booklet, "Thirty Second Annual Catalogue of Officers and Students in the University at Lewisburg" (now Bucknell University) 1881-1882.

Mark Neuman of Lewisburg for donating a canister of film from the Grand Opening of the J. J. Newberry Store in downtown Lewisburg, as well as events surrounding the Sesquicentennial Celebration of Union County that took place in 1963.

Jennifer Handlan of Lewisburg for donating files and historical information relative to properties on Mitchell Lane located along Penns Creek in the Village of Weikert.

Scott Sagar and the Thomas T. Taber Museum of Williamsport for donating two photograph (film) envelopes from the Rea & Derrick Store once located of Market Street in Lewisburg.

Ms. Isabella O'Neil, Head, Special Collections and University Archivist at the Ellen Clarke Bertrand Library of Bucknell University for donating numerous real photo postcard views from the Lewisburg area; book containing the rules & regulations and roll of members from the Spyker Graham Post No. 52, PA G.A.R. of Lewisburg; guest book from the 50th anniversary event, as well as a scrapbook from the early 1900s from the Lewisburg Civic Club; folder containing information pertaining to the Lewisburg Hotel and the committee formed in 1994 to purchase and restore the landmark hotel; folder containing information from Lewisburg's Third Century Planning Committee from 1983-1985; folders with information, bulletins, histories, and information pertaining to several Lewisburg area churches (mostly from the 1950s), including The First Baptist Church, Saint Andrew's Parish Church, Beaver Memorial Methodist Church, Christ's Lutheran Church, and the First Presbyterian Church; booklet entitled "Annual Report 1971 Union-Snyder Joint Planning Commission"; map of East Buffalo Twp. including the campus of Bucknell University; Welcome to Lewisburg pamphlets from 1952 and 1954; booklet pertaining to the U.S. Penitentiary Lewisburg, PA from 1954; copy of the structure and duties of the Municipal Government of Lewisburg from 1954; several page document pertaining to the U. C. Civil Defense from 1962; information from 1983 pertaining to the Lewisburg Planning Commission and the Flood Plain; flyer from the West

Archives Committee Report continued

Branch Stamp Club from 1947; brochure from the U. C. Farmers-Businessman's group from 1950; nearly two dozen booklets, brochures, flyers, and programs from concerts at the Weis Center by the Susquehanna Valley Choral, West Branch Chorus, and others from the 1980s through the 2000s; booklets and information pertaining to the Laurelton State School and Hospital; folder pertaining to the home located at 20 University Ave. in Lewisburg; program from the Re-dedication Service at the Soldiers Monument in Lewisburg; photographs from the 1999 Lewisburg Holiday Parade; blotter from the Wesley Fellowship at the Beaver Memorial Methodist Church in Lewisburg; a blueprint from the Lewisburg Sanitary Sewer System from 1908; and a blueprint showing the areas of the borough affected by flood waters from the Susquehanna River and Buffalo Creek in March 1936.

Phyllis Dyer of Winfield for donating a 2023 calendar from the North Shore Railroad and large shopping bags from Weis Market, Purple Platypus, The Mercantile, Rea & Derick, and Retrah.

Charlotte Winter of Lewisburg for donating menus from D. C. Coffee & Tea Co. of Mifflinburg; and Peking Garden, La Primavera, and Mancini's of Lewisburg.

Margaret Paterson of Scottsdale, AZ for donating items relative to her years of service at the Laurelton State School and Hospital including her master's thesis "Predicting Productivity in a Sheltered Workshop Setting"; softcover book entitled "An Introduction to the Vocational Rehabilitation Process"; 25 year longevity certificate; 25th anniversary mug from the West End Job Support Services at Laurelton; two weavings from the 1971 Occupational Therapy Weaving Shop at Brown Hall at LSSH; a folder with information relative to the Vocational Adjustment Services at LSSH; and a file containing notes from Margaret pertaining to her employment history at the Laurelton Center.

Gretchen Lee of Northumberland for donating a collection of items that belonged to Paul and Joanne (Spaid) Simington, (Joanne Simington was a longtime Mifflinburg Elementary school teacher). Included in the donation were photograph albums from Mifflinburg High School (Class of 1941); photograph album and scrapbook from Joanne's time at Bloomsburg State Normal School (now Bloomsburg University); letter notifying Joanne Spaid of receiving her Master's Degree from Bucknell University; a photograph album containing Joanne Spaid's family photographs; tintype photograph; flyer from 1963 - Unto These Valleys Presents; several scrapbooks maintained by Joanne Simington; photograph of the Mifflinburg first grade class of 1965/1966; campaign card for Charles M. Renner (candidate for Union County Treasurer); postcard from Beaver Memorial Methodist Church in Lewisburg; various photographs of Joanne (Spaid) Simington; twelve of Joanne Spaid's report cards; newspaper clippings of Hotel Shikellamy; vintage Christmas cards presented to Joanne Simington from her students; photograph of H. Edelman in uniform (1941); boxed Bible from the Caldwell Consistory - A. & A. Scottish Rite; programs from the 1909 Lincoln's Birthday Anniversary held at the Linntown Elementary School, the 1917 Lewisburg High School graduation exercise, Union County Federation of Women's Club event from 1954, "Potions N' Notions" held during the Bicentennial Workshop at the Mifflinburg Elementary School in February 1976, and the Mifflinburg Class of 1940 production of "The Graduate's Heritage." Also included in the donation were the following books and booklets: History of Mifflinburg by Richard V.B. Lincoln; The Story of a County from 1963; Mifflinburg Celebrates 1792-1942; History of Chillisquaque Church (1987 reprint); Mooresburg Presbyterian Church History by Kostenbader from 1958; the June 1945 Alumni Quarterly (Bloomsburg University); Catalogue of Backus Water Motor Co. circa 1903; "From Small Town Boy to Biblical Scholar" by Edwin Dreese Freed & Ann W. Freed, Jane S. Kessler, Editor; souvenir letter historic images of Mifflinburg taken from postcards, and "Memories of Mifflinburg 1742-1942" published by *The Mifflinburg Telegraph*.

Archives Committee Report continued

John Mathias of Lewisburg for donating Vol. 1 & 2 pertaining to the issuance of the initial public offering of JPM Company (Lewisburg) stock in 1996; folder containing newspaper clipping pertaining to JPM from 1996; six deeds from 1952-1963 for land purchases made by the JPM Company; a certificate from the Union County Prothonotary's office from March 17, 1952 certifying the owners of the JPM Company (Jay P. Mathias, Earl P. Mathias, and Roy P. Mathias); two VHS tapes on the JPM Company; a book published during JPM's 50th Anniversary (1949-1999); file folder containing documents related to the origination and startup of the JPM Company; scrapbook of photograph, newspaper clipping and other JPM Company memorabilia; a railroad spike (painted gold) with a brass tag signifying the grand opening of the Buffalo Valley Rail Trail on November 4, 2011; and a wooden turkey call made from chestnut timber salvaged during the restoration of the Millmont Covered Bridge, which was produced in cooperation with the SUN Career & Technology Center of New Berlin (No. 66 of 155 turkey calls produced).

Elaine Wintjen of Lewisburg for donating an oil on canvass painting by Elizabeth Hitchcock; Cole's Hardware shopping bag; and a Buffalo lapel pin.

Eleanor Gold of Mechanicsburg for donating several Union County tourism and GIS maps; minutes from the Vicksburg Community Board; newspaper clipping from September 2000 pertaining to the explosion at the Carriage Corner Restaurant; information and memorabilia from the Reed's School, including reunions from 2011-2020; three large cabinet photographs pertaining to the Buffalo Valley Grange at the Linn Wert farm near the Dreisbach Church; large public sale bill from Harold Erdley's sale held March 21, 1964; a 1987 calendar from Harold R. Erdley Insurance; and a collection of newspaper clippings pertaining to Union County people and events.

The Society made the following Packwood House Online Auction purchases:

Union County, PA, printed and hand-colored fraktur birth certificate (7 ½" x 9 ½") for Elisabeth Dunkel, b. 1820, printed by Peter Montelius; and a Pennsylvania "Puss in the Corner" patchwork quilt (78" x 79"), early 20th century, purportedly made by Emma Kunkle of Union County..

Archives Report and Request by Matt Wagner

UCHS is excited about our recent purchase of the former Packwood property. The facility provides us with a wonderful amount of space for exhibits, meetings, and collections storage.

During recent auctions of the contents of the Packwood Museum, the Society was able to purchase some significant Union County artifacts, including artwork, local ephemera, important archival documents, woven coverlets, and quilts from the Shoemaker collection.

Even though we had the funds to make these purchases, the auctions caught us by surprise and the expenditures were not anticipated in the planning of this year's budget.

The Board welcomes your financial assistance to help offset these expenditures. Monetary donations can be made to the society by contacting the UCHS office.

PHOTOS NEEDED !

The Society is always seeking old photographs of Union County. We are especially interested in photos from White Deer and Gregg Twps. Subjects sought include farms, houses and businesses; people engaged in agriculture, work and leisure; special events and celebrations; trains, buggies, wagons, and early cars.



Photographs may be donated or loaned. In appreciation, the Society will provide the donor with a digital copy of the photograph, plus give credit for the photograph when it is used.

RESEARCH LIBRARY and OFFICE

The Union County Historical Society office and library – in the county courthouse, 103 S. 2nd St., Lewisburg – welcomes visitors Mondays, Tuesdays, and Thursdays 9 – 3 (closed 12 –1). We have an extensive collection of reference material and family histories, and easy access to probate and land records. Those not able to visit may send research questions by email to info@unioncopahistory.com.

Fees for services:

- General genealogical search (one family): \$60 includes copying up to 20 pages of documents, such as probate files, deeds, marriage and death data, and family histories – as available;
- Copy of specific will, letters of administration, orphans court record, deed: \$5 + \$1/page; minimum \$10.
- Obituary search and copy (please provide year and approximate month of death) – \$5 per person.
- Property deed searches are negotiated on an individual basis. Please inquire.

The society accepts donations of Union County family histories, paper or digital files, for the library.

Recently added to the library:

The Light of Inward Vision, Selected Addresses and Essays of Arnaud C. Marts, Robert R. Goss, ed. 1973. Marts was president of Bucknell University 1935-1945. Donated by Carolyn Gunster.

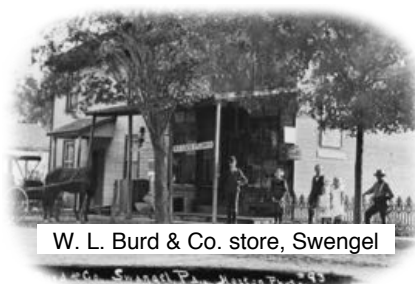


Recent Genealogy Research

If you have information to share, contact UCHS or contact researcher (address and/or email below).

WOLTEMATE, Fred'k. aka Waltemartin or Martin, b.c.1750, served in Brunswick Corps, Riflemen [sent copy of reference in *German Military Immigrants from the American Revolution in PA* by Nancy Rice Kidoo]. Researching Hessian soldiers: Anna Marie Brucker; anna.maria.brubaker@gmail.com

BURD'S Store: seeking photo and info. [The W. L. Burd & Co. store served Swengel 1894-1948. Owned and operated by Wm Luther Burd, later by sons Clarence and Arthur Burd. Burd's Variety Store, owned by Arthur "Peck" Burd was at 340 Chestnut St., Mifflinburg c. 1940s. Neither store still stands.] Sharon Devlin; skdevlin23@comcast.net



W. L. Burd & Co. store, Swengel

REAM Mary Ann b.c.1822 E. Buffalo, Union Co., PA, d/o Samuel Ream (1775 Berks, PA-1870 IL) + Anna Salome Aurand. Seeking info on Ream family. [sent will for Jacob Rehm 1848, Chapman Twp, wife Catherine; Letters of Admin. for Marg't Ream 1834, Lewis Twp; deeds for Rehm/Ream: Nicholas, George, Benj, and Samuel, Catherine + Nicholas, Catherine + Henry, Benjamin + Susan, Samuel+ Salome]. Donna Rhody, 17807 Daves Ave., Monte Sereno, CA 95030-3217; Denizen5645@gmail.com

DRIES/DREES: seeking early court documents. [sent Letters of Admin for: Peter Dries 1820, Jacob Drees 1823, Geo Dreese 1828, Jacob Drees 1854, Henry Romich 1822; Wills for John Drees 1847, John Drees 1823, Geo Drees 1849]. Karla Tipton, 631 Crawford Ave., Barberton, OH 44203; tiptonkd@mindspring.com

SNOOK, Peter d.c.1818, Beaver Twp.. Request for Letters of Administration [sent]. Karen Beth Shontz Hardy; kbshontz@aol.com

YERIAN, Jacob d. 1814? + Barbara Leiby d. 1829 OH. Seeking estate records. No documents found. Carol LaPorte; claporte423@gmail.com

Query about the large circular stonework in Soldiers' Memorial Park, Lewisburg [seen in this early 1900s photo of Lewisburg Water Company pumping station and stand pipes]. Alan Sica, Professor of Sociology, Penn State, State College; ams10@psu.edu.





One of the joys derived from serving on the UCHS board is helping to plan a variety of programs for the historical society.

First is the Open House for the public at the former Packwood Annex, on 20 August from 1-5 p.m. Please stop by, check out what we've done so far, offer any suggestions, and ask any questions you may have about where UCHS is and where we're going.

Next is the program "Derrstown, You Miserable Town! If This Street-corner Could Talk," on the early history of Lewisburg and Water St. on 10 Sept., at 1 p.m.

We also have a two-part series of events at the Dale-Engle-Walker House scheduled for Saturday afternoons 16 September and 7 October, co-sponsored by the Lewisburg Children's Museum.

And on 23 October at 6 p.m. at the Lewisburg library we have a program on the history of Lewisburg businesses and properties by historian and author Rick Sauers.

Please join us as we begin this upcoming season's exciting programs.

Bruce

**Union County Historical Society
2023 BOARD:**

Bruce Teeple, President
Bill Brobst, Vice President
Matt Wagner, Secretary
Phyllis Dyer, Treasurer
Barb Franck, Mike Molesevich
Susan Rapp, Darren Rhyne
Bethany Slear, Christine Sperling

The society appreciates donations from

Tom & Mary Lou Rich
Stacy Richards
Mary Lotspeich & Chuck Confer

Welcome New Members

Eugene & Sheila Armstrong
of Box Elder, SD
Mary Lotspeich & Chuck Confer
of Lewisburg, PA

NOMINATIONS to the Union County Historical Society Board of Directors for 2024

According to the UCHS bylaws, UCHS shall send ballots to members with the August newsletter so that members may vote for board candidates. Ballots are due back to the UCHS office by August 30. *Vote counting will occur at the September board meeting, date and time to be announced.*

The Nominations Subcommittee recommends that Susan Rapp of Lewisburg and **Matt Wagner** of Mifflinburg be elected to continue on the UCHS board for three years 2024-2027.

The Subcommittee recommends that Bethany Slear of Lewisburg be elected as a new member of the board, to serve for three years beginning 2024 (she is temporarily filling an open board slot). Bethany is a second-generation member of the Historical Society and grew up supporting and participating in UCHS events. She has a background in non-profits and higher education, and works at Bucknell University as Program Director of Experiential Learning in the Freeman College of Management.

Members, you may cast your ballot via email or by mail.

Email Ballot by August 30

To: info@unioncopahistory.com

Subject: Ballot

Text: The Nomination Committee has selected the following to serve three-year terms on the UCHS board: **Susan Rapp** and **Matt Wagner**, continuing on the board, **Bethany Slear**, new to the board.

I (_____) vote _____ ("yes" or "no", or leave blank) on these nominations.



Mail-in ballot by August 30 to UCHS, 103 S. 2nd St., Lewisburg, PA 17837.

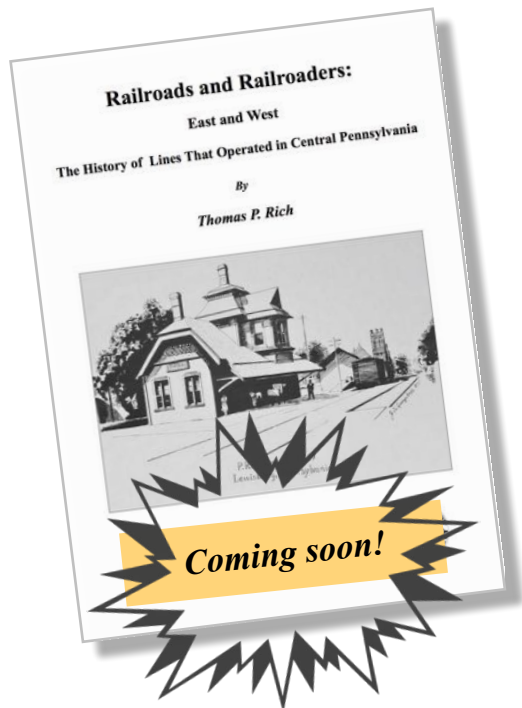
The Nomination Committee has selected the following to serve three-year terms on the UCHS board: **Susan Rapp** and **Matt Wagner**, continuing on the board, and **Bethany Slear**, new to the board

I (_____) vote _____ ("yes" or "no", or leave blank) on these nominations.
your name



Union County Courthouse
103 S. 2nd Street
Lewisburg, PA 17837

Return Service Requested



Membership in the Union County Historical Society supports programs, the research library, our collections, the Dale-Engle-Walker House, and the historic site at Market & N. Water Street, Lewisburg. The Union County Historical Society is a 501(c)(3) non-profit organizations. Membership is tax deductible as allowed by law. **Member benefits** include newsletters, discounts on society publications, free use of our reference library.

New, renewal, and gift memberships: please mail this form to:
Union County Historical Society, 103 S. 2nd St., Lewisburg, PA 17837

Name _____

Address _____

Email _____ Phone _____

____ Lifetime Membership (per person) \$800

Annual Support: ____\$200 ____\$150 ____\$100 ____\$80 ____\$45 ____ Student (K-12) \$10

Membership for ____ Individual ____ Family ____ Business *** ____ New Membership *** ____ Renewal

Additional donation (specify amount) _____

Please visit www.unioncopahistory.com for events, articles, resource list, and more.