

The concrete-arch bridge at **Turtle Creek** was built in 1926 for old Route 15 (just west of the current highway). In a 1986 article in *PA Magazine* Maurice J. Forrester, Jr. wrote about exploring the creek on his lunch breaks from working nearby.

He noted "a lot of hawthorne... along with privet, wild plum, chokecherry and similar species... larger trees, including many sycamores... The combination of abundant moisture and plenty of sunlight in [an] open area resulted in a profusion of wildflowers from April through October... Toward the end of May when the privet blooms, the air is heavy with their rich scent... hummingbirds are apparently fond of privet... darting blurs circling the white-flowered shrubs like oversize bumblebees." He also observed ducks, kingfishers, a green heron, and water snakes.

One day while sitting alongside the creek, he "suddenly noticed a shape swimming in the water... a muskrat... it swam and dove... occasionally it would scramble up on the bank... once it even clambered into the branches of a bush overhanging the stream..." While watching the muskrat, another animal appeared, a groundhog "heading for a burrow entrance among the tangled driftwood on the shore... oblivious to [his] presence it paused momentarily to scratch its ear much as a dog would do." ("Out to Lunch Along Turtle Creek" by Maurice J. Forrester, Jr., *PA Magazine*, First Quarter 1986).

Turtle Creek, north of Winfield, runs west to east beside Furnace Rd. and under Rt 15 to the river.



Photo by Mike Molesevich

Early European settlers looked for suitable waterways to construct a dam and mill race, such as the mouth of Turtle Creek. John Aurand (1725 -1807) immigrated from Heidelberg, Germany in 1757, first settling in Tulpehocken, PA. He bought property at Turtle Creek in 1772, and built a gristmill, sawmill, dwelling house, and barn on his 228 acres. Aurand is considered to be the founder of Turtleville, the town around the mill that eventually had the gristmill and sawmill, blacksmith and carpenter shops, a school and 10 homes. In 1779 Aurand sold to Morgan Jenkins, whose descendants kept the property for 100 years. It is unknown when the mill ceased to operate. Described in 1860 as a three-story frame gristmill, fifty feet by forty feet, the structure is now gone. (*Water-powered Gristmills of Union County, Pennsylvania* by Thomas P. Rich and David W. Del Testa; Union County Historical Society, 2013.)



Dear Society Members and Friends,

This organization is fortunate for many reasons. One of those reasons is your generous level of support, which is extraordinary for a county of this size.

The responsibilities we face, though, present an enormous number of challenges. These tasks include making our extensive research resources available, providing public programming, and operating the Dale-Engle-Walker property. The house and surrounding three acres constantly need preventive maintenance, whether it's repairing the lane, mowing the grass, or cleaning the interior.

We're always adding items to our sizable archives and collections, but these materials require proper cataloging, care, and storage conditions. Take, for example, our monumental Oral Traditions Project. Once we've digitized these 50-year-old taped interviews with Union County residents, members will be able, through our website, to hear those voices reach across the years. We're also planning to digitize and post another recent acquisition on the internet: a complete set of the *Mifflinburg Telegraph*, covering more than a century-and-a-half.

As one old expression goes, "If you want something done, ask a busy person," and UCHS members are certainly no exception. We have one multi-talented, part-time Research and Outreach Specialist in our office who (among other things) answers your questions about local history and produces this newsletter. Dedicated volunteers – your friends and neighbors – perform the rest. We're also welcoming a new group of members on the Board of Directors who are bringing a whole new set of talents and perspectives to improve our operations.

You'll hear about many more exciting developments soon, so please consider joining us as we weave Union County's past and present into a tapestry to cherish for generations. We welcome every person showing up at our door, every minute spent, and every dollar donated. With you, we can continue rising to any occasion and meeting every challenge we face.

*Bruce*

### **OFFICERS & BOARD 2022**

Bruce Teeple, President  
Kathy Swope, VP  
Matt Wagner, Secretary  
Phyllis Dyer, Treasurer  
Bill Brobst  
Jen Dobias  
Barb Franck  
Mike Molesevich  
Susan Rapp  
Darren Rhyne

### **Nominating Committee recommendations** submitted at the May board meeting:

- \* Bill Brobst and Jen Dobias to fill two unexpired terms on the board until the end of 2022, and be elected to serve January 2023 to December 2025.
- \* Logan Roush and Christine Sperling be elected to join the board, serving January 2023 to December 2025. To ease the transition, Logan and Christine may attend meetings as ex officio (non-voting) members between July and the end of the year.
- \* Darren Rhyne and Bruce Teeple be elected to serve January 2023 to December 2025.

Continuing on the board are:

Phyllis Dyer, Susan Rapp, Matt Wagner (up for re-election next year), and Barb Franck, Mike Molesevich and Kathy Swope (up for re-election the following year).

More information on board elections will be provided in the next newsletter.



### **The society welcomes new members**

Sidney & Kathy Dreese, Camp Hill, PA  
Ronald J. Haas, Bloomsburg, PA  
Beverly Harvey, Lewisburg, PA  
Alfred Siewers, Lewisburg, PA

**The society is grateful for a donation** from Susquehanna Community Bank for the use of a West Milton panoramic photo (from *Union County River Towns*) in their redesigned office in West Milton – the photo is awesome – go check it out!

## TOURS at the DALE-ENGLE-WALKER SITE

The Dale-Engle-Walker House will host tours **Sundays May 29, June 12, June 24, July 4, July 25, September 25, and October 9**. Tours, offered at 1:00 and 2:30 in the afternoon, are free although donations are gratefully accepted. Additions or changes to the schedule will be posted on our website.



The house was built by Scots-Irish immigrant Samuel Dale c.1793 and occupied by his family until the 1850s. The property stayed in the Dale family until 1929, leased by a series of tenant farmers, until it was sold to Jacob and Maude Engle. The Engle family operated a dairy farm from 1936 to 1944. Charles and Rosemary Walker owned the property from 1957 to 2000, restoring the house and maintaining a farm. The Walker estate bequeathed the property to the Union County Historical Society.

The c.1789 **Kantz Log Cabin**, a gift of Marcia Milne, was relocated to the property in 2019. The log cabin exemplifies the kind of dwelling that was on the site before the limestone house was built.

Also on site is a replica Wagon Shed with a display of vintage farm implements, and the restored dairy shed.



The Dale-Engle-Walker property is available for family photographs, reunions, weddings and receptions. Contact the UCHS office at 570-524-8666 or [info@unioncopahistory.com](mailto:info@unioncopahistory.com) for fees and scheduling.

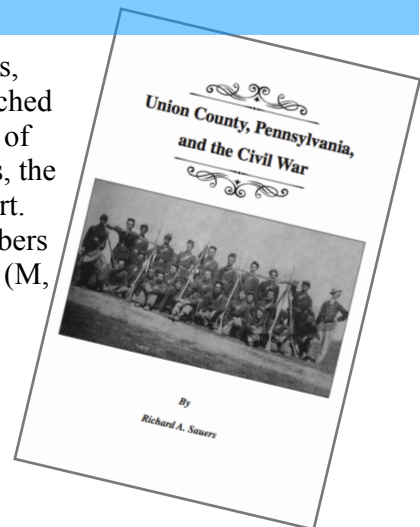
## UNION COUNTY, PENNSYLVANIA, AND THE CIVIL WAR

by Richard A. Sauers

“The [Civil] war affected everyone who lived in the United States, whether or not they realized it.” Historian Richard A. Sauers researched Civil War era newspapers, diaries, letters, and more to tell the story of Union County’s experience: the soldiers’ aid societies, local politics, the draft, and the doctors, nurses, and chaplains who aided the war effort.

*Union County, Pennsylvania, and the Civil War* is FREE to members who have renewed for 2022. Pick up your copy at the UCHS office (M, T, Th: 9 to noon and 1 to 3). If you would like your copy mailed, please contact us at [info@unioncopahistory.com](mailto:info@unioncopahistory.com) or 570-524-8666. Additional copies are available at member price of \$23.70. Non-member price is \$27.00.

Not yet renewed for 2022? Stop in the office, mail a check, or use Paypal on our website: [www.unioncopahistory.com](http://www.unioncopahistory.com).



**Looking for UCHS books? Mondragon Books** is a new place to purchase publications by the Historical Society. Proprietor Sarajane Snyder has a selection of *Heritage* books plus our popular playing cards (with vintage photos from around the county).

Stop in the shop at 430 Market Street, Lewisburg (open Wednesday – Saturday 11:00 to 6:00, and Sunday 11:00 to 4:00).



## Recent Genealogy Searches and Their Researchers

*If you have information to share, please contact UCHS or the researcher (address / email below).*

FARLEY, Mabel, Feb 1883 – Feb 1982 Lewisburg, buried Highland Cemetery; attended Bucknell; Hicksville, NY, high school principal. A school wing is being dedicated to her. Seeking any descendants. Historian James Janis, 516-931-1417; jamesgothmog13@aol.com

ZELLERS, John + Rosina, Peter + Henrietta, Henry + Mary; George: assorted deeds. Nancy Stevens, 4000 Goforth Rd., Kyle, TX 78640; nancystevens4000@gmail.com.

BOND, Samuel, Chillisquaque Twp. c.1800, in Union County c.1807–1813 according to *Annals of Buffalo Valley* [no records in Union County]. Also John Bond – not found. Dale Bond, Wasilla, Alaska; dalebond@mtaonline.net

WISE, Israel, c.1805 (Montgomery County) – 1887 Crawford Co., OH + Adeline Leitzzy, daughter Mary Catherine b. c. 1834 (where?); Israel's father, John Fred'k Wise had land warrant c. 1814 Centre Twp. + Barbara Kurtz, + Sarah (unknown). Norma Yerkey, ndyerkey@aol.com

WITMER, Abraham of Chapman Twp. (now Snyder Co.). Seeking 1826 will [sent]. Steve Staruch, Poland, NY; stevestaruch@gmail.com

MAIZE, John Michael, 1770 – 4 Mar 1841 + Anna Barbara Smith, 1776 – 30 July 1848. Frances Maize, 1812–1880 + Joseph Shaffer, 1812 – 25 Sep 1864. Buried New Berlin. Seeking location of family farm east of New Berlin. [sent copy of Maize family file; photo of c.1819 Maize barn, opposite]. Sue Dannecker, Eagan MN; sadannecker@gmail.com.



STICKLE, Thompson, designer of monument for the grave of Abraham Lincoln's mother, Nancy Hanks Lincoln. Seeking picture of Mr. Stickle [none found]. Stickle was born 1834 in Lewisburg, moved to Ohio by 1850, then Illinois by 1860, died 1923 in Cook Co., IL. Rowland Hauser, Hauser@aol.com for John Essig, Masonic Lodge, Aurora, IL; essig8760@comcast.net.

HIGH, George 1752 Philadelphia – 1842 Hartleton, Union Co., PA (unconfirmed) son George, daughter Catherine (unconfirmed). Seeking parents and etc. [no family file, no will, no tombstone, one deed for property in Mifflinburg]. Charles G. High; highmanorfarms@yahoo.com

ROCKEY, George, 1 July 1786 – 2 Oct 1855 + Margaret, 9 Jan. 1790 – 4 May 1848. Seeking George's will [sent], Margaret's maiden name. Karl L. Held, Liverpool, UK; pakaheld@gmail.com

**The Union County Historical Society Office** is open to fully vaccinated visitors. Masks are requested. Please call or email ahead of any visit to UCHS so we can advise you on the current office hours.

**Research services are provided by our staff.** Please email your research questions.

Fees: • General genealogical search (one family) – \$50 includes copying up to 20 pages of documents.  
• Search for wills, letters of administration, or orphans court record – \$5 plus \$1/copied page  
• Obituary search and copy (must know year and approximate month of death) – \$5 per person  
• Deed searches are negotiated on an individual basis. Please inquire.

See [www.unioncopahistory.com](http://www.unioncopahistory.com) / Research Resources for document list and more.

**Donations of Union County family histories** (print or digital) are accepted for the library.



## Music at Bucknell University

### 1922 and 2022

Taking a look 100 years into the past through Bucknell's yearbook *L'Agenda* from 1922, it is clear that the Bucknell University Glee Club had a successful year as they proclaimed that the club "enjoyed the best season that [had] yet been experienced by the organization" (1922 *L'Agenda*, 149). The Club performed in Harrisburg, Hollidaysburg, Cresson, Jeanette, Vandergrift, Connellsville, Pittsburgh, Linesville, and Kittanning. Throughout the fall of 1921 and spring of 1922, many newspapers of Pennsylvania wrote positively of the Bucknell University Glee Club. For example, on January 3, 1922, *The News-Herald* of Franklin, Pennsylvania wrote, "The chorus numbers are coming off with snap and dash ... Every man is ready to do his part and these are not inconsiderable parts."



One hundred years later, the Bucknell Department of Music continues its tradition of creativity and excellence. For the first time since the onset of the COVID-19 pandemic in 2020, Bucknell's vocal

students made an appearance in a live performance this academic year. The University Choir gave a concert and the Bucknell Voice Lab performed its first opera in two years on campus this spring. The opera is the English version of *Hansel and Gretel*.

As a student of Bucknell's Music Department, it has been a pleasure to learn a bit more about the people who came before me in this field. I hope that another 100 years from now the department will continue to be as prosperous.

*Tom McKillop*



**Added to the UCHS library:**

"*French Jacob*" of *Buffalo Valley – and Beyond*, compiled and donated by Valerie Bieber.  
*The Bennage-Bennetch Family History*, compiled and edited by Betty Jane (Bennetch) Wise and David Lee Wise, donated by Valerie Bieber.  
*The Chronicle*, Volume XXXIII, Spring 2022.



1922

- \* First successful insulin treatment of diabetes is made, by Frederick Banting in Toronto.
- \* US President Warren G. Harding installs the first radio in the White House in February; Harding makes his first radio speech in June.
- \* Radio stations begin broadcasting in US states.
- \* The Eskimo Pie ice cream bar is patented.
- \* The US Supreme Court rebuffs a challenge to the Nineteenth Amendment to the US Constitution which gave women the right to vote (*Leser v. Garnett*).
- \* Egypt is declared independent of the UK.
- \* The silent horror film *Nosferatu* premieres in Berlin, Germany.
- \* Louis Armstrong leaves New Orleans and joins Joe "King" Oliver's Creole Jazz Band in Chicago; Duke Ellington moves from D.C. to New York City's Harlem Renaissance jazz scene.
- \* Mahatma Gandhi is arrested in Bombay for sedition and sentenced to prison.
- \* The US Navy commissions the first aircraft carrier, *The USS Langley*.
- \* Joseph Stalin is appointed General Secretary of the Central Committee of the Soviet Communist Party.
- \* F. Scott Fitzgerald's short story collection *Tales of the Jazz Age*, including "The Curious Case of Benjamin Button," is published; Marcel Proust's "Swann's Way" from *A la Recherche du temps perdu* is published in English; the modernist novel *Ulysses* by James Joyce is published in book form in Paris.
- \* Construction on Yankee Stadium begins in May in the Bronx, NY. The NY Giants defeat the NY Yankees in the World Series, played at the Polo Grounds.
- \* The Lincoln Memorial in Washington D.C. is dedicated.
- \* The Irish Civil War (The Troubles) begins.
- \* Morocco revolts against Spain
- \* The Greek Army revolts against the government.
- \* The British Broadcasting Company BBC is formed, beginning radio service from London.
- \* The Nationalist Fascist Party and Benito Mussolini come to power in Italy.
- \* The Red Army occupies Vladivostok.
- \* The Ottoman Empire is abolished after 600 years.
- \* The Railway Shopmen's Strike, a nationwide strike of 400,000 workers during July and August, is caused by a cut in wages for repair and maintenance workers approved by the Railroad Labor Board.
- \* Incorporation of the Arkansas Short Line Railroad (later the St. Louis Southwestern RR); the New York Central acquires the Cleveland, Cincinnati, Chicago and St. Louis RR. The first Willamette locomotive is built.
- \* Albert Einstein's *The Meaning of Relativity* is published by Princeton University Press.
- \* Archaeologist Howard Carter, his team and dozens of Egyptian workers, find Pharaoh Tutankhamun's tomb; Carter and Lord Carnarvon are the first people to see inside the tomb in 3000 years.
- \* Hyperinflation in Germany during 1922 causes the value of the Deutsche Mark to go from 47 per US dollar to 7000 per dollar.

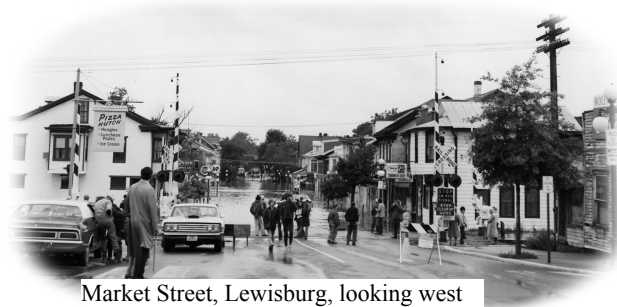


## 1972

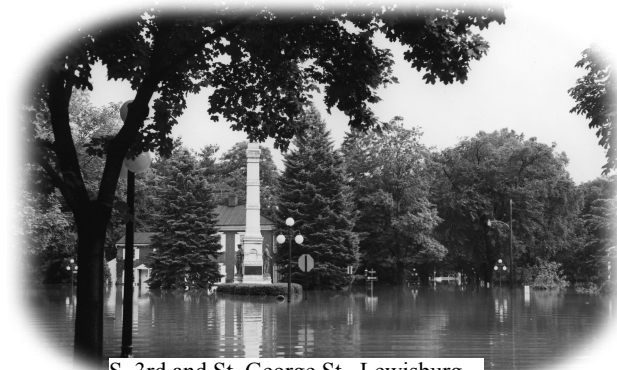
- \* Queen Margrethe II of Denmark succeeded her father Frederick IX – the first queen of Denmark since 1412, and the first Danish monarch not named Frederick or Christian since 1513.
- \* Irish Troubles: anti-British riots; unarmed civilians killed by the British Army on Bloody Sunday; three car bombs explode on Bloody Monday, 22 bombs in Belfast on Bloody Friday.
- \* The last US military draft lottery is held (these draftees were not called to serve). The US conducts the Easter offensive, the bombing of Hanoi and Haiphong, mining of Haiphong Harbor, and Christmas bombing in North Vietnam.
- \* Mariner 9 sends photos as it orbits Mars; Pioneer 10 is the first spacecraft to leave the solar system; Apollo 16 and 17 conclude lunar explorations.
- \* The California Supreme Court voids the state's death penalty, commuting all death sentences to life in prison.
- \* US President Richard Nixon visits the People's Republic of China and meets with Mao Zedong.
- \* The US, the Soviet Union, and 70 other countries sign the Biological Weapons Convention banning biological warfare. Nixon and Leonid Brezhnev sign the SALT I treaty and the Anti-Ballistic Missile Treaty.



Rts 15 and 45, Lewisburg, looking north



Market Street, Lewisburg, looking west



S. 3rd and St. George St., Lewisburg

- \* **Hurricane Agnes**, a category 1 storm, 1000 miles in diameter, hit the east coast of the US June 14-23, killing more than 120 people, and causing billions in damage. Torrential rain in central PA cause the Susquehanna and tributaries to flood. Towns were cut off and roads closed. Pennsylvania Governor Milton J. Shapp declared an extreme emergency.
- \* Sally Priesand becomes the first US woman rabbi.
- \* Five White House staffers are arrested breaking into Democratic National Committee offices; President Nixon and chief of staff Haldeman are recorded talking about using the CIA to obstruct the FBI's investigation into the break-ins.
- \* The Democrats select George McGovern as presidential candidate; the Republicans nominate Nixon to run again. Nixon wins the presidency in November with only 55 percent of the electorate voting, the lowest voter turnout since 1948.
- \* The first episode of *The Price is Right* is hosted on CBS by Bob Barker.
- \* Eleven Israel Athletes are murdered by Arab gunman at the Munich Olympics.
- \* The first female FBI agents are hired.
- \* HBO begins operating as a pay television service.
- \* The first women are admitted to Dartmouth College.
- \* The Dow Jones Industrial Average closes above 1000 (1003.156) for the first time in history.

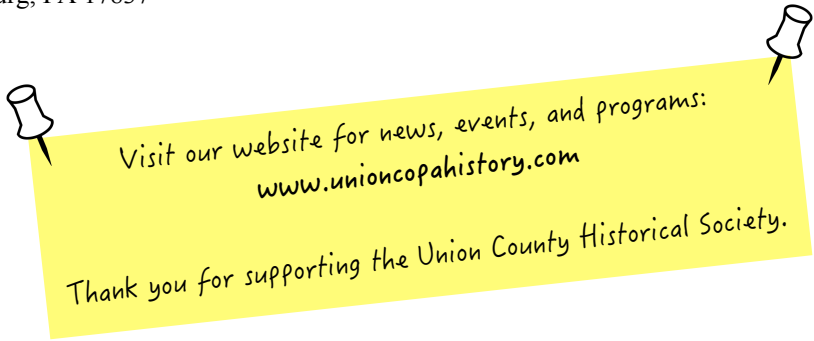


**Union County Historical Society**

Union County Courthouse

103 South Second Street

Lewisburg, PA 17837



**Membership** in the Union County Historical Society supports programs, the research library, the growth of our collections, and the 1793 Dale-Engle-Walker House. The Union County Historical Society is a 501(c)(3) non-profit organizations. Membership is tax deductible as allowed by law. **Member benefits** include newsletters, a discount on society publications, free use of our reference library, access to on-line resources.

**New, renewing, and gift memberships: please mail this form to:**  
Union County Historical Society, 103 S. 2nd St., Lewisburg, PA 17837

Name \_\_\_\_\_  
Address \_\_\_\_\_  
Email \_\_\_\_\_ Phone \_\_\_\_\_

\_\_\_\_\_Lifetime Membership (per person) \$800  
Annually: \_\_\_Business \$250 \_\_\_Friend \$150 \_\_\_Family \$80 \_\_\_Individual \$45 \_\_\_Student (K-12) \$10

Please visit **www.unioncopahistory.com** for events, articles, resource list, and more.