



103 S. 2nd St., Lewisburg, PA 17837
info@unioncopahistory.com
570-524-8666

“Exploring Union County’s past to inform the present and future.”

Dear Society Members and Friends,



Nine months ago, your Board of Directors took an enormous leap of faith when UCHS purchased the former Packwood property to create a museum, exhibition gallery, and meeting place. This is an investment in the future, but it’s also a responsibility requiring support from everyone living in or connected to Union County.

UCHS has a dedicated corps of people who research your past, develop programs, maintain our properties, and work with other community groups – including the Lewisburg Arts Council, the Children’s Museum, the Mifflinburg Buggy Museum, and the Linn Conservancy – to enhance the quality of life for everyone here.



Union County Museum

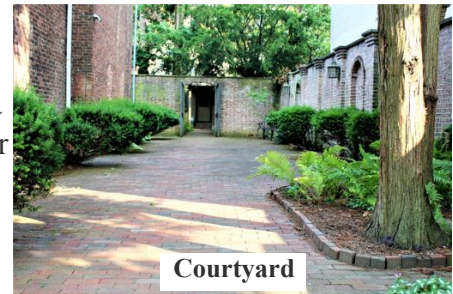


and Gallery

We now have more than enough exhibit and storage space for the society's ever-growing collection of county photographs, documents, artifacts, and locally made items. By partnering with the Lewisburg Arts Council, we can offer gallery space for art exhibitions, thus continuing Edith Fetherston’s promotion of artists and their work. And to top it off, the courtyard will provide a unique site for outdoor events.

We’re proud to serve as Union County’s ambassadors and as responsible stewards of this remarkable legacy, but this is a joint effort because none of this has any meaning without your help. Our Capital Campaign will provide funds as we move forward, and we invite all members and friends of UCHS to participate as visitors, as donors, and as volunteers.

Without you, none of this is possible. With you, your historical society will continue living up to its potential by representing the best Union County can offer.



Courtyard

Please join us as we create a history for the future. Thank you! *Bruce*

Congratulations!

Board members Phyllis Dyer, Sue Rapp, Bethany Slear, and Matt Wagner began their new three-year terms of office in January.

Barb Franck, Mike Molesevich, and Christine Sperling have agreed to run again for the term beginning in January 2025 until December 2027.

What's Happening?

Your board has an exciting and diverse list of programs, exhibits, and events planned for the **Union County Museum and Gallery!** But none of that would be possible without a bit of housecleaning. We first developed a comprehensive plan to reimagine this facility's new role in the community. We drew on the financial expertise of board members and had structural engineers examine the buildings, so we could review financial options, close on the property, and develop renovation timetables.

A group of board, committee, and community members then began the process of revitalizing the buildings. From May to July, we cleared out the Gallery's basement and attic, removed old carpets, located electrical and water connections, painted the walls, cleaned windows, and refinished the wood floors. We developed a schedule for ongoing improvements, repairs, and replacements to our physical plant. We revitalized the courtyard, this hidden gem out back, and drew up plans for plantings next spring. We then invited members of the community to see the new Gallery space and hear about plans for its use.

Our inaugural program in the facility, *Derrstown, You Miserable Town! If Only This Streetcorner Could Talk!* was presented in September, followed by *Railroads and Railroading in Union County*, Tom Rich's program and book signing in December.

We hope to continue offering something for everyone throughout the year, so please plan to join us!



Program in the Gallery

Welcome new members from Lewisburg, PA
Daniel Hyde, Katheryn Irwin Lentz, Ricki Lee Moler,
David Kaszuba and Hope Kaszuba.

The society appreciates specific donations from
Vncent & Helene Basile, Lois Dale,
Ronald Haas & Suzann Schiemer,
Lois Huffines, Diane & Jim Lengle, Barb Ritchey.

**And all those who have donated
to the Capital Campaign.
Thank you!**

Union County Historical Society 2024 BOARD:

Bruce Teeple, President
Christine Sperling, Vice President
Susan Rapp, Secretary
Phyllis Dyer, Treasurer
Bill Brobst
Barb Franck
Mike Molesevich
Darren Rhyne
Bethany Slear
Matt Wagner

PROGRAMS

Enslavement in Central Pennsylvania....And How They Got Away With It

February 11 at 1 PM at The Gallery, 15 North Water Street, Lewisburg, PA

What common perceptions about enslavement and the Underground Railroad are true, and what ones don't hold up under scrutiny?

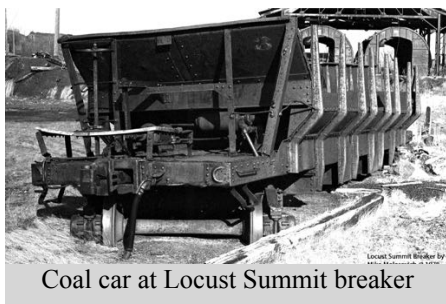
In this program on African American history, Bruce Teeple focuses on the myths and realities of life in this region as experienced by those held or previously held in bondage. Enslavement is often viewed as an exclusively southern phenomenon that focused on growing and processing cotton through the nineteenth century. In fact, it occurred right here in Central Pennsylvania! Learn how Pennsylvania's citizens and legislators skirted around the law and kept the "peculiar institution" intact, despite its purported "abolition," for at least another fifty years.

The program is free and open to the public.

Anthracite Region Photographs – Two Perspectives

March 23 at 1 PM at The Gallery, 15 North Water Street, Lewisburg, PA

Dave Hafer & Mike Molesevich will present their original photographs of the Shamokin and Mount Carmel area they took years ago while exploring coal mines, strip mines, breakers, towns, the Centralia mine fire, and unique geologic



Coal car at Locust Summit breaker

features. Dave is an avid photographer of many years and is from Lewisburg. Mike lived in Mount Carmel in his early years and captured images with his first 35 mm manual camera during and after college in the late 1970s. The program, free and open



Centralia

to the public, will be one hour with discussion and questions.

Two Towns, Two Families, and Twenty Ledgers:

Unraveling an 18th Century Tale of Business, Politics, and Revolt by Bruce Teeple.

April 14 at 1 PM at The Gallery, 15 North Water Street, Lewisburg, PA

What tales do twenty business ledgers found in a local attic reveal about life on the Susquehanna Frontier? What financial and political struggles were occurring here, events that often contradict common notions about the 1790s? What groceries do you buy at the store? What items do you think people bought in the 1790s? How has the experience changed and how is it similar? We'll not only look at how shopping has changed over the past two hundred and thirty years, but we'll also examine how the Susquehanna Valley's volatile political climate swirled around one store and two families at the epicenter of the 1794 "Whiskey Rebellion."

The program is free and open to the public.

PROGRAMS

WHAT TREASURES LIE BENEATH OUR FEET!

Vintage Bottle Display (First in a three-part series)

Saturdays, April 6, 13, 20 & 27, 1–4 PM in the Gallery, 15 North Water Street, Lewisburg, PA

An extensive collection of vintage glass bottles discarded in privies and discovered by Robert E. Lee III during digs in Central PA. Admission is \$3

Vintage Bottle Program (Second in a three-part series)

April 6 at 1 PM at The Gallery, 15 North Water Street, Lewisburg, PA

An entertaining talk by master ceramicist Robert E. Lee, III about the treasures and stories he's amassed while excavating abandoned privies. This will serve as an introduction to an actual dig in the Gallery Courtyard on April 27 and 28. Admission is \$3

What Treasures Lie Beneath Our Feet! – Live Dig! (Third in a three-part series)

April 27 and 28 at 1 PM in the Gallery Courtyard, 15 N. Water St., Lewisburg, PA

Robert E. Lee, III will conduct a Dig in Gallery Courtyard. Did you ever dig for buried treasure in your backyard? Did you ever pull something from the past out of the ground and wonder what stories it could tell?

Lee will hand-dig in the courtyard behind the Market and North Water streets buildings, the site of an early cemetery and likely early trash pit or privy.

Come join us as we dig up, sift through, discover, and share the joys of this activity. Admission is \$3.



Canals of Central Pennsylvania

Sunday, May 5 at 1 PM

at The Gallery, 15 North Water Street, Lewisburg, PA

Mike McWilliams, as canal boatman “Captain Mick,” will present a program on the canals that operated on the Susquehanna River.

In the early 1800s, with few good roads in the country, canals along the rivers provided an efficient means of transportation. The Pennsylvania canal system began in 1824-26, with the main canal from Philadelphia to Pittsburgh on the Susquehanna, Juniata, Connemaugh and Allegheny rivers. The North Branch on the Susquehanna linked Northumberland to Athens to the New York canals; the West Branch from Northumberland to Sinnemahoning Creek. A cross-cut canal built in 1834 connected Lewisburg with the West Branch Canal on the eastern shore. The building on Market Street, now the Union County Historical Society Museum, served travelers on the canal.

The program is free and open to the public.

PROGRAMS

Northumberland County Council for the Arts & Humanities presents:

The History of Shamokin & Coal Township from Sanborn Fire Insurance Maps

Thursday, May 16, 2024, at 5:30 PM

The NCCAH Gallery
2 East Arch Street, Shamokin, PA

Mike Molesevich will present the history of Shamokin & Coal Township using Sanborn Fire Insurance Maps, which are color, to-scale, hand-drawn maps with detailed descriptions of buildings, railroads, train stations, coal breakers, collieries, businesses, and industries from 1885 - 1929. The program is one (1) hour with time for discussion and questions.

Mike is from Mount Carmel, is a retired environmental consultant who used Sanborn Maps to research industrial history in his work. He is a board member of the Union County Historical Society, a former Mayor of Lewisburg, attended school in Mount Carmel, Juniata College and Bucknell University.

Union County Historical Society Presents

Sanborn Maps of Lewisburg,

Sunday, July 14 at 1 PM

at The Gallery

15 N. Water Street, Lewisburg, PA

Mike Molesevich will present the history of Lewisburg using the Sanborn Fire Insurance Maps, designed to accurately describe urban areas for insurance purposes.

The color-coded, to-scale, hand-drawn maps provide detailed descriptions of buildings, homes, businesses and industries, roads and railroads, and waterways. (Sanborn maps of Lewisburg and Mifflinburg are available for research in the UCHS office/library.)

Mike's program, which will be one hour with time for discussion and questions, is free and open to the public.

The DALE-ENGLE-WALKER HOUSE **1471 Strawbridge, Road, Lewisburg, PA**

The historic Dale-Engle-Walker property will be open to the public in the spring 2024. The historical society will host tours at the House on the following dates:

Saturday, May 11 at 1 PM with Bruce Teeple

Sunday May 19 at 2 PM with Bill Brobst

Sunday June 2 and 23 at 1 PM with Bruce Teeple

Saturday June 15 at 2 PM with Bill Brobst

Tours are free and open to the public; donations are accepted.

The Dale-Engle-Walker property is available for family photographs, reunions, weddings and receptions.

Please contact the UCHS office at 570-524-8666 or info@unioncopahistory.com for fees and scheduling.



Archives and Collections Report by Tony Shively

The Archives and Collections Committee of the Union County Historical Society fosters the collection of Union County manuscripts, ephemera, local advertising, and decorative arts through gift and purchase. The Archives Committee would like to thank everyone who donated and gifted items to the society. Your gifts and donations to the collection of materials held by the society help to support its mission of enhancing the appreciation and visibility of Union County history.

We thank Jack Fisher of Lewisburg (on behalf of the Betty Cook estate) for an incredible number of donations and gifts accepted by the Archives Committee, summarized below:

Related to Lewisburg and Union County history: A metal sign from Betty's Cook's beauty parlor, "Beauty Shoppe Cook's", metal plate with engraving of prominent Lewisburg resident John Walls; original 1868 Atlas of Union and Snyder counties, and a Citizens Electric Company map of Lewisburg & vicinity; early black and white photographs of the Cameron/Cook home and a card featuring a painting by David Seybold of the home in Lewisburg.

Slifer House and the Civil War Memorabilia: Betty Cook's book "Union County and The Civil War"; prints of Ulysses S. Grant and Robert E. Lee; postcards and photographs; newspaper clippings, letters, and memorabilia of Slifer House Museum and the Civil War reenactments including photos of Betty and James A Getty, President Abraham Lincoln impressionist; Slifer House Christmas photographs, ornaments, greeting cards and prints; tour guide material (including Betty's pin); framed replica of the Remembrance Card for the Hon. Eli Slifer; Slifer House candle, candle stick holder, and imprinted jewelry box.

Photographs and Media: 100+ color photographs of the Lewisburg Victorian Parade and interior views of the Slifer House Museum; cabinet photographs of Narrow Gauge Railroads, lumbering, shoe store in Lewisburg, Lewisburg Flood photographs from 1894, Halfpenny Woolen Mill, 2nd Street School in Lewisburg, horse drawn carriage, the Baker House in Lewisburg, high school graduation and reunions; DVD "Preserving Your Past Memories for the Future - Slifer House 200 Years of American Fashion 1760-1960" (1997); DVD "Historical Lewisburg - Where the Past Lights the Future" an original documentary produced by WVIA.

Christy Mathewson: invitation to "Matty: An Evening With Christy Mathewson" (1997); program from Eddie Frierson's "Mathewson - Reflections from America's First Sports Idol" (1989); correspondence from Bucknell to Betty Cook, representing the Mathewson family at the First Hall of Fame Class event on October 8, 1979; newspaper clippings from the Ultimate Baseball Book. Framed diplomas, certificates, and awards issued to Betty Cook from the State Beauty School, Lewisburg Borough, Lewisburg Garden Club, Slifer House Volunteer, Veterans of Foreign Wars, North Central Pennsylvania Historical Association, Lewisburg Women's Club, and Lewisburg High School Alumni Association.

Numerous books and booklets on local and national history, architecture, research, genealogy.

Newspapers and Magazines such as Lewisburg Journal (bound volume from 1904) and original copies from November 26, 1890; the Lewisburg Chronicle from May 14, 1875, Grit, Daily Item, Lewisburg Saturday News, and Philadelphia Inquirer newspapers; also the Standard Journal, Bucknell World, Susquehanna Life; with articles on many events such as parades, WWII USO Gala, WWII veterans.

Pamphlets and Programs of events at Slifer House, Lewisburg High School, Bucknell University. And Folders of important raw material on the Civil War (including Original Civil War era letters preserved by Congressman Benjamin K. Focht and gifted to Betty Cook by Brown & Florence Focht); Slifer House, Lewisburg and Union County, WWII, and so much more.

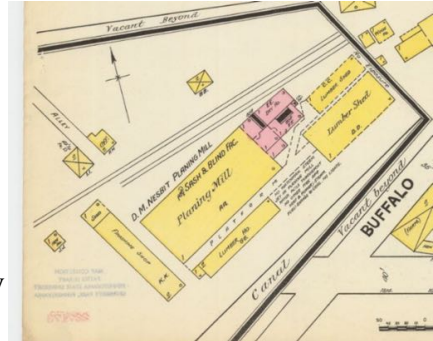
Archives and Collections Report by Tony Shively

A **double-wide school desk** was donated by Valerie Bieber.

The desk was likely made at the Nesbit Planing Company that was across the river from



Lewisburg, alongside the canal on the east side of the river with the railroad running parallel to the company. Even though it says “Sash and Blind Factory” it likely made other products like wooden desks. This section of the Sanborn Map of Milton shows the company within the dark border.



This lovely c.1840 **coverlet made by Benjamin Angstadt** in Union County was recently donated by the Schwenkfelder Museum. While attending a quilt event at the museum in November, Helene Basile (a member of our archives committee) met curator Candace Perry and told her about the UCHS plans for the former Packwood House. The Angstadt coverlet was offered to UCHS for our collection.

Benjamin Angstadt was born in Berks County c.1808. His family moved to Lewisburg in 1824 and by 1830 Benjamin had a weaving shop on N. 4th Street in Lewisburg where he wove jacquard coverlets such as this one, signed in the lower corner.



UCHS Archives Donates to Letchworth Archives

Karren Russel of Letchworth State Park in New York is delighted with the Fetherson material that Tony Shively donated to the park's archives on September 1, 2023. It is the practice of the society's archives committee to pass along items that rightfully belong to other organizations.

RESEARCH LIBRARY and OFFICE

The Union County Historical Society office and library – in the county courthouse, 103 S. 2nd St., Lewisburg – welcomes visitors Mondays, Tuesdays, and Thursdays 9 – 3 (closed 12 –1). We have an extensive collection of reference material and family histories, and easy access to probate and land records. Please send research questions by email to info@unioncophistory.com.

Additions to the Research Library

Newspapers on microfilm donated by Rick Sauers: Lewisburg Saturday News 1915 - 1952 and Union County Standard May 1952 - Dec. 1960; Sunbury Gazette & Miner's Register: Sunbury, May 12, 1838 - Feb 13, 1844; Sunbury American and Shamokin Journal May 3, 1845 - April 21, 1855; Republican Argus May 4, 1808 - July 15, 1812.

Union County Historical Society
Union County Courthouse
103 S. 2nd Street
Lewisburg, PA 17837

Membership in the Union County Historical Society supports programs, the research library, our collections, the Dale-Engle-Walker House, and the historic site at Market & N. Water Street, Lewisburg. The Union County Historical Society is a 501(c)(3) non-profit organizations. Membership is tax deductible as allowed by law. **Member benefits** include newsletters, discounts on society publications, free use of our reference library.

New, renewal, and gift memberships: please mail this form to:
Union County Historical Society, 103 S. 2nd St., Lewisburg, PA 17837

Name _____

Address _____

Email _____ Phone _____

_____Lifetime Membership (per person) \$800
Annual Support: ___\$200 ___\$150 ___\$100 ___\$80 ___\$45 ___Student (K-12) \$10
Additional donation (specify amount) _____

Please visit www.unioncopahistory.com for events, articles, resource list, and more.